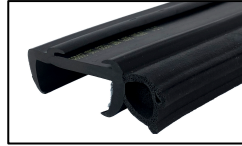


## MATERIAL DATA SHEET

DESCRIPTION

BAILEY CARAVAN / MOTORHOME OPENING  
WINDOW SEAL 35MM PANEL



ORDER CODE

**CS 4091**

PARAMETER	VALUE
BASE MATERIAL	BLACK EPDM
HARDNESS	65 – 75° SHORE A
TENSILE STRENGTH	8.5MPA
ELONGATION @ BREAK	285%
COMPRESSION SET (22 HOURS @ 70°C)	20%
TEMPERATURE RANGE	-40°C TO +120°C
<u>AGED 70 HOURS @ 70°C</u>	
HARDNESS CHANGE	+1° SHORE A
TENSILE STRENGTH CHANGE	+4%
ELONGATION @ BREAK CHANGE	-9%
SPONGE MATERIAL	BLACK EXPANDED EPDM
DENSITY	0.5 – 0.9G/CM <sup>3</sup>
WATER ABSORPTION	2.5%
COMPRESSION SET 50% (22 HOURS @ 23°C)	19%
COMPRESSION DEFLECTION (25%)	80KPA

This information and our technical advice, whether verbal, in writing or by way of trials, is given in good faith but without warranty. This also applies where proprietary rights are involved. Our advice does not release you from the obligations to check its validity and to test our products as to their suitability for the intended use. The storage, application and use of our products are beyond our control and, therefore, entirely your own responsibility. Our products are sold in accordance with our General Conditions of Sale. The information contained within this data sheet is subject to change without notice.

**CS 4091 CONTINUED**

<u>HEAT RESISTANCE (168H @ 70°C)</u>	
COMPRESSION DEFLECTION CHANGE	-4%
SEALANT	WHITE BUTYL MASTIC
SPECIFIC GRAVITY (ASTM D-71)	1.3
SOFTENING POINT (ASTM D-36)	200°C
ELONGATION @ 25°C	300% (MIN)
TEMPERATURE RANGE	-40°C TO +90°C