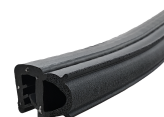


MATERIAL DATA SHEET

ORDER CODE

ETS 2481



RUBBER

MATERIAL

BLACK EPDM

HARDNESS (IRHD)

75-85°SHORE A

TENSILE STRENGTH (ASTM D2240)

80KG/CM² (MIN)

TEAR STRENGTH (ASTM D624)

3KG/MM (MIN)

BRITTLE POINT (ASTM D746)

-40 °C

TEMPERATURE RANGE

-40 °C TO +120 °C

AGED 70 HOURS @ 70 °C

HARDNESS CHANGE (IRHD)

+2

TENSILE CHANGE

+15%

COMPRESSION SET (ASTM D395)

40% (MAX)

OZONE RESISTANCE (70 HOURS @ 50 °C, 50 PPHM, 20% EXT)

NO CRACKS

METAL INSERT

MATERIAL (UNI 5961-67)

STEEL

H.R.B. (ROCKWELL HARDNESS)

80-90

TENSILE STRENGTH

50KG/MM (MIN)

This information and our technical advice, whether verbal, in writing or by way of trials, is given in good faith but without warranty. This also applies where proprietary rights are involved. Our advice does not release you from the obligations to check its validity and to test our products as to their suitability for the intended use. The storage, application and use of our products are beyond our control and, therefore, entirely your own responsibility. Our products are sold in accordance with our General Conditions of Sale. The information contained within this data sheet is subject to change without notice.

ETS 2481 CONTINUED

<u>SPONGE RUBBER (BULB)</u>	
MATERIAL	BLACK EPDM
VOLUME MASS (INDICATIVE)	500-700G/DM ³
BRITTLE POINT (ASTM D746)	-40 °C
OZONE RESISTANCE (70 HOURS @ 50 °C, 50 PPHM, 50% EXT)	NO CRACKS
WATER ABSORPTION (ASTM D1056) 22 HOURS @ 23 °C	1-2% (MAX)
<u>PROFILE PROPERTIES</u>	
COMPRESSION SET (ASTM D1056) 7 DAYS @ 70 °C	50% (MAX)
STAIN OF RUBBER IN CONTACT WITH ORGANIC FINISH	
- MIGRATION STAIN	SATISFACTORY
- CONTACT STAIN	SATISFACTORY
- COLOUR FASTNESS (ASTM D750)	SATISFACTORY

This information and our technical advice, whether verbal, in writing or by way of trials, is given in good faith but without warranty. This also applies where proprietary rights are involved. Our advice does not release you from the obligations to check its validity and to test our products as to their suitability for the intended use. The storage, application and use of our products are beyond our control and, therefore, entirely your own responsibility. Our products are sold in accordance with our General Conditions of Sale. The information contained within this data sheet is subject to change without notice.